



TAILGATE LIGHT BAR

(UNIVERSAL TRUCK)

RS-60-LEDBAR-S

INSTALLATION INSTRUCTIONS

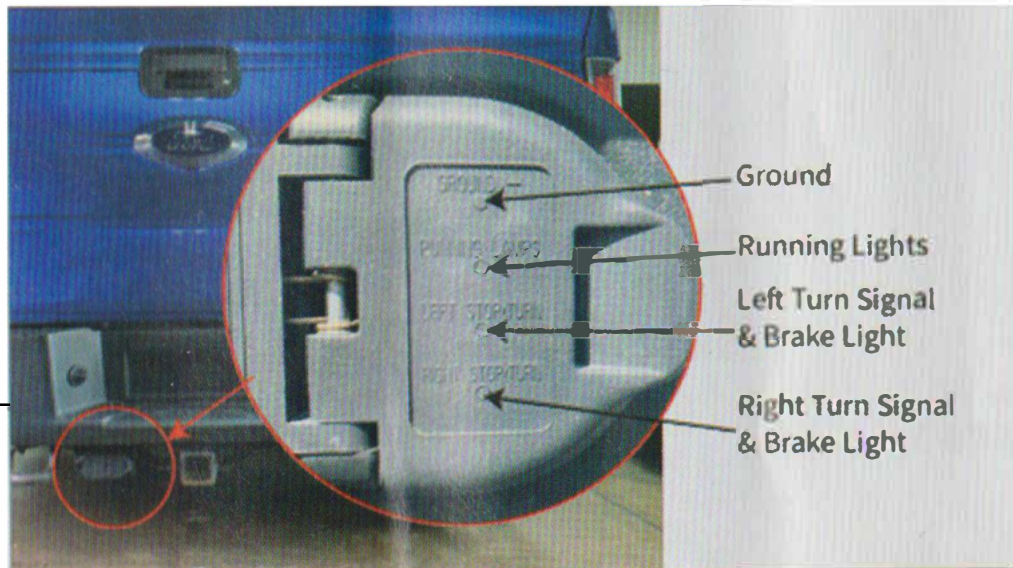
CONTENTS

(1) Light Bar
(1) Scotch Lock Connector

TOOLS REQUIRED

- Metric Socket Set w/ Ratchet
- Phillips Head Screw Driver
- Flat Head Screw Driver
- Multimeter/Test Light
- Pliers
- Automotive Grade Soap
- Microfiber Towel
- Isopropyl Alcohol

STEP 1



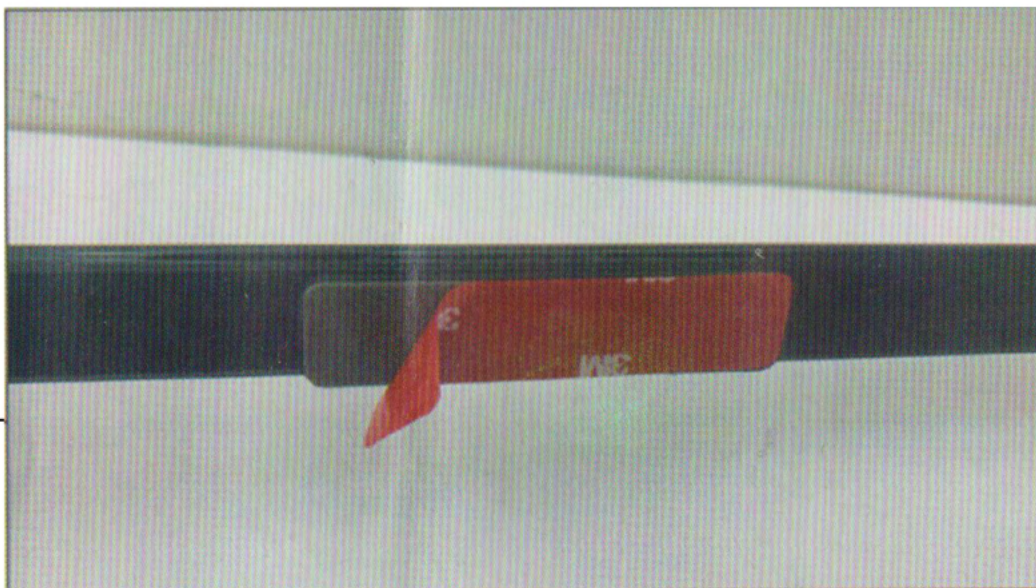
Begin the installation by locating the factory 4-Pin trailer plug. Using test light or multi-meter, test the trailer plug for all functionalities; turn signals, running lights, and brake lights. The reverse light will be wired in later. If the plug isn't getting power, reference your owner's manual to locate and test the trail plug fuse.

STEP 2



Next, locate a suitable mounting position for the light bar. Typical installation is between the tailgate and the bumper. Preparation for installation; thoroughly wash and dry the mounting location using an automotive grade soap and water. Ensure that you give the surface enough time to dry prior to installing the light bar. It is recommended that you wipe the mounting locations with isopropyl alcohol to ensure a wax and grease free mounting surface. ** Do not use silicone-based cleaners

STEP 3



Test fit the tailgate light bar prior to removing the tape back. The wiring must exit the tailgate light bar on the driver side of the vehicle. Once you are comfortable with how the tailgate light bar fits, remove the tape backing and install the tailgate light bar.

STEP 4



Wiring- Route the 4-pin plug so that the extra wiring is out of the way, and plug it into the factory plug. Then, run the white wire towards the taillight.

STEP 5



Wire the white wire into the factory reverse light. Begin by removing the fasteners that hold taillight to the vehicle.

STEP 6



Remove the taillight to access the factory wiring. With the key on and ENGINE OFF, apply the emergency brake and place the gear selector in reverse. Using a test light or multimeter, locate the 12-volt power supply for the factory reverse light. Using the supplied scotch lock connector, connect the wire from the tail gate light to the factory reverse light wiring. Reinstall the taillight. Installation is now complete.